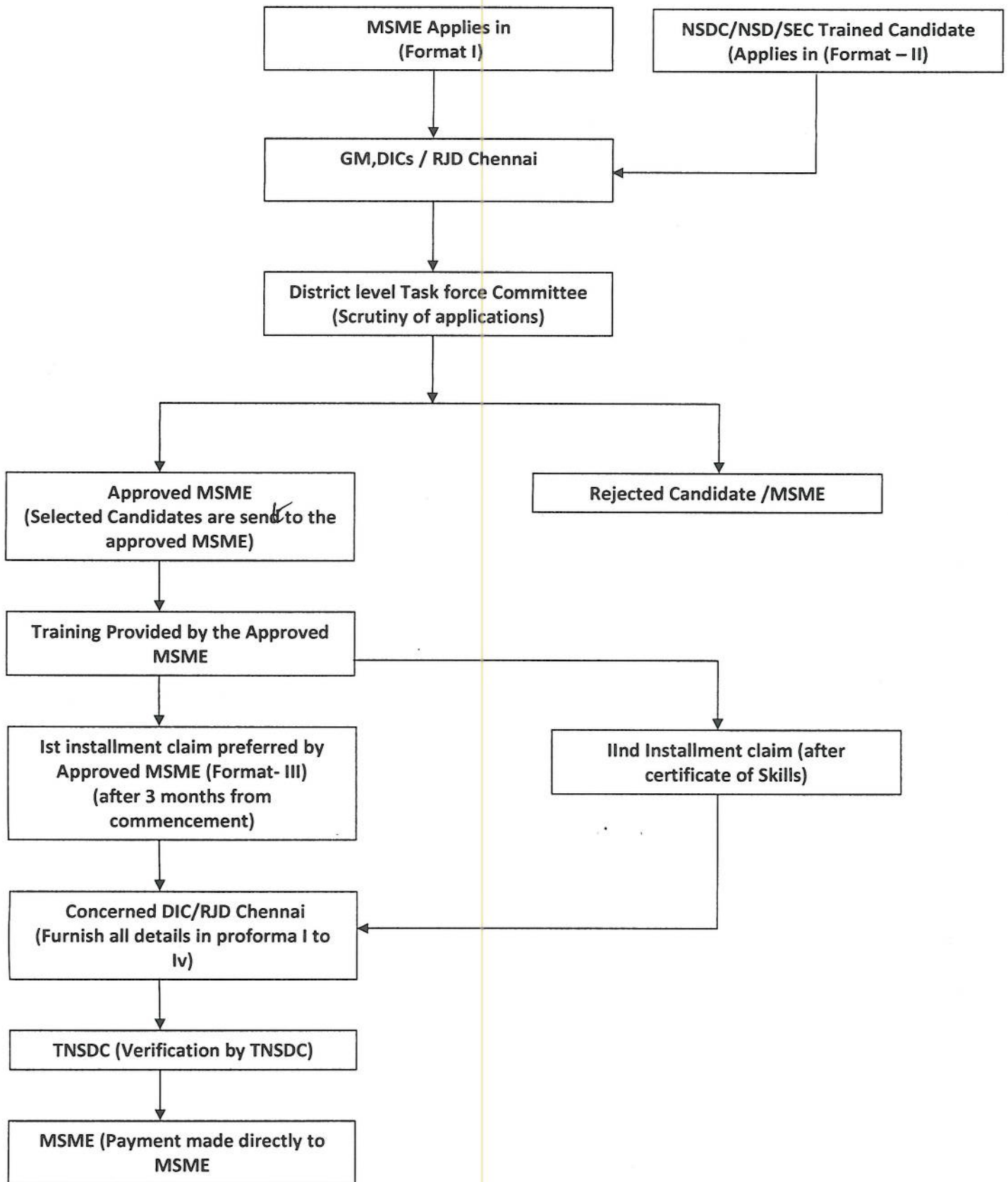
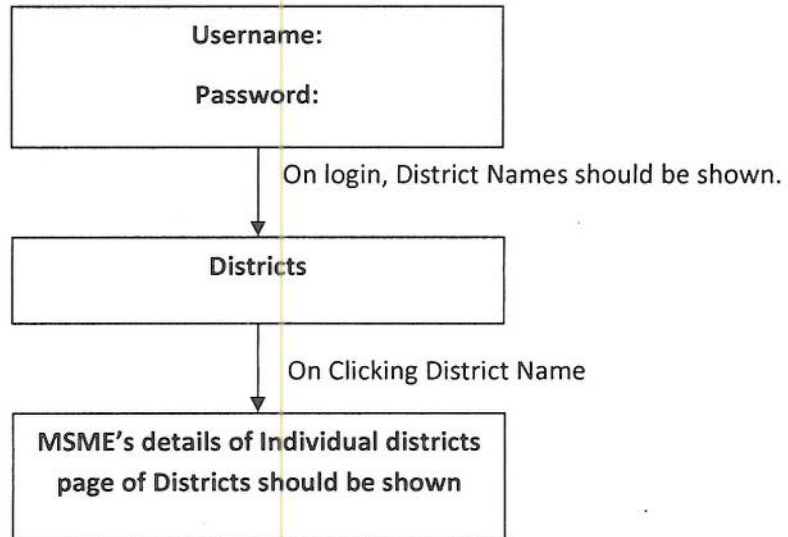


PROCESS FLOW CHART OF MSME SKILL TRAINING AND EMPLOYMENT SCHEME



The website implementation Flow Chart may be created as follows for TNSDC.

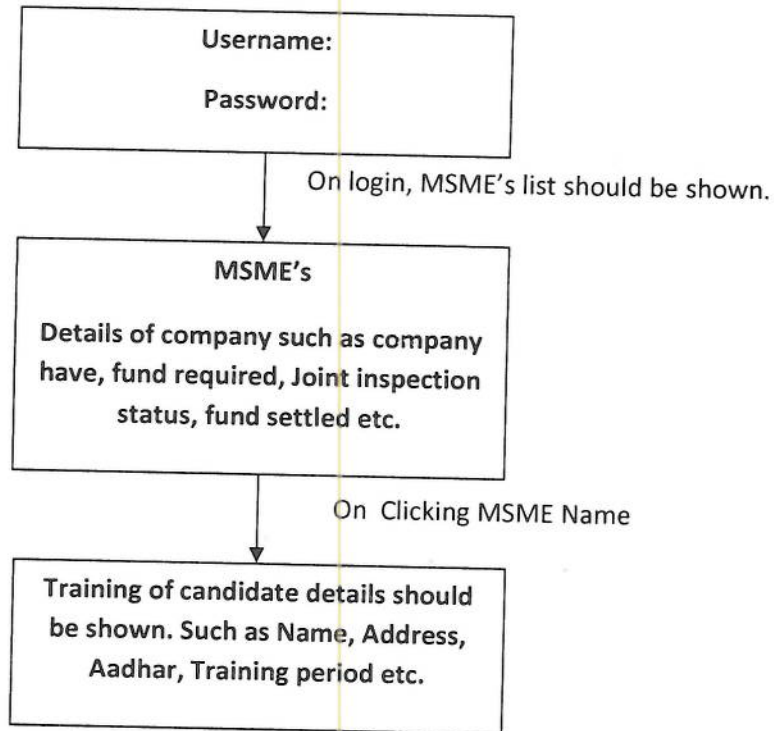
TNSDC



TNSDC will submit the details of Joint Inspection status and fund settlement details will be filed.

The website implementation Flow Chart may be created as follows for DIC's.

DICs



This is for your kind perusal and submission please.